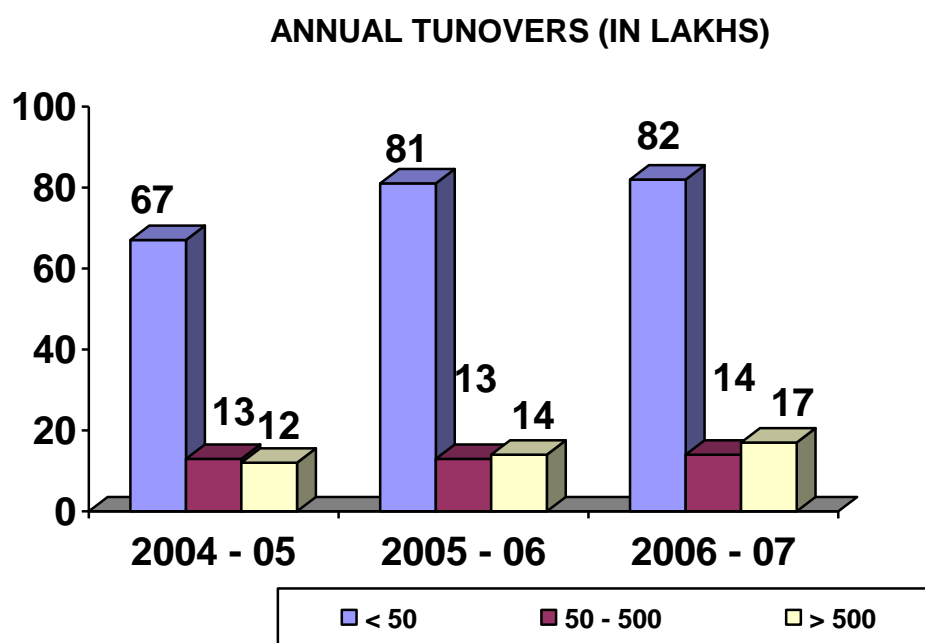


SUMMARY OF FINDINGS

- There are app. 125 small-scale units in this cluster wherein boiled rice as well as raw rice is manufactured.

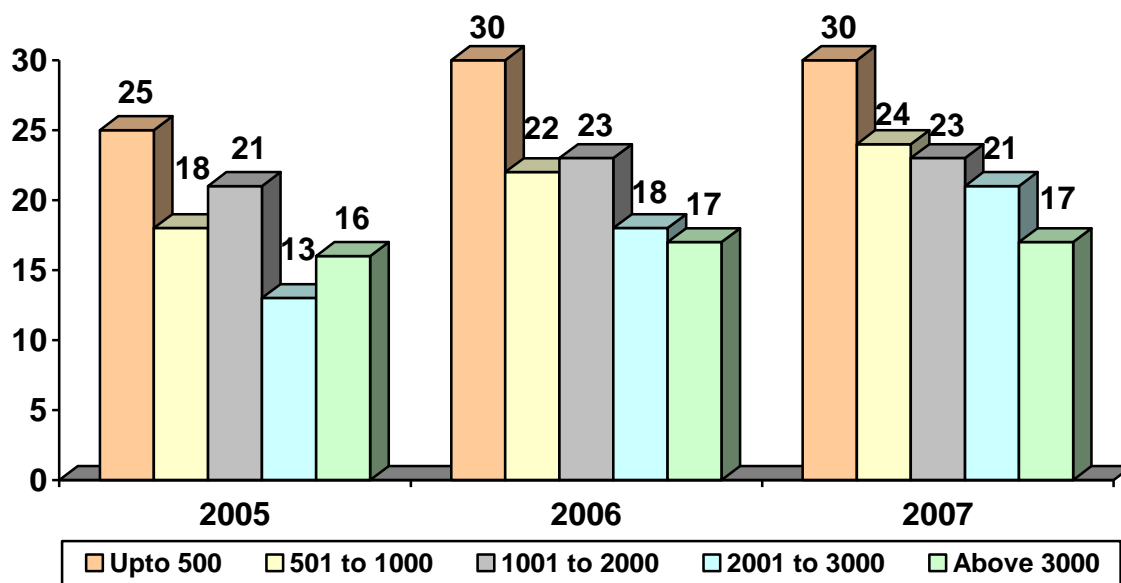
ANNUAL TURNOVER

Number of companies with turnovers in different ranges as given in index



PRODUCTION

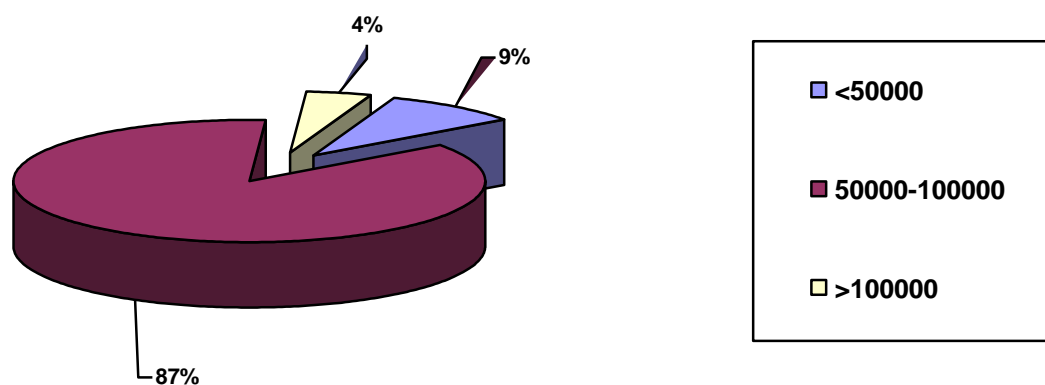
(In tonnes per annum)

**ENERGY REQUIREMENTS****USAGE OF MAJOR FUEL**

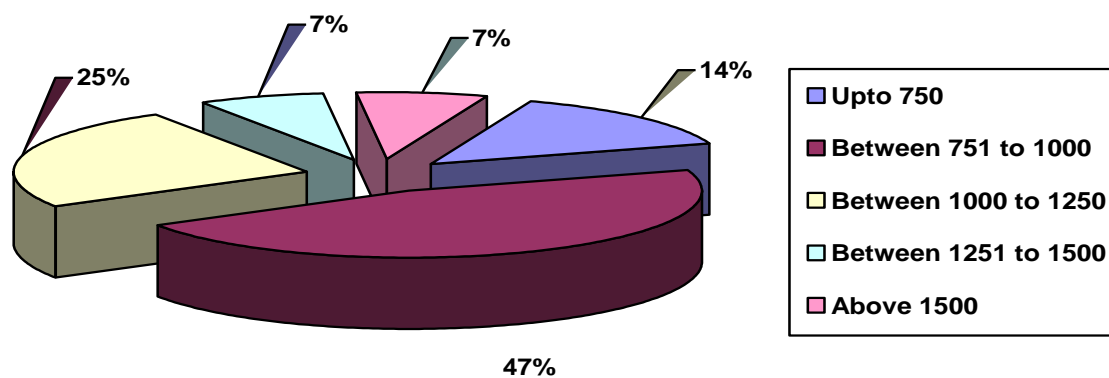
FUEL	QTY CONSUMED PER ANNUM	NUMBER OF UNITS USING THE FUEL
ELECTRICITY	88,50,000 Units	116
FIREWOOD	30300 Tonnes	28
HUSK	10650 Tonnes	11

USAGE OF ELECTRICITY

(USAGE IN UNITS CONSUMED PER ANNUM)

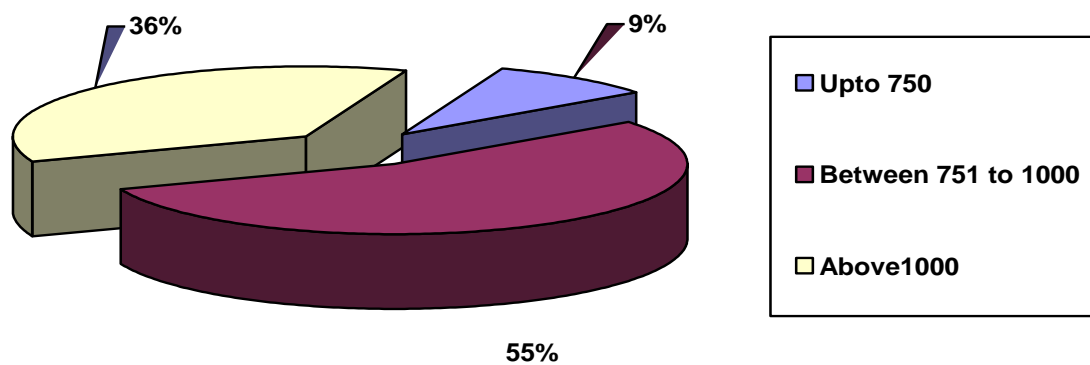
**USAGE OF FIREWOOD**

(USAGE IN TONNES PER ANNUM)



USAGE OF HUSK

(USAGE IN TONNES PER ANNUM)

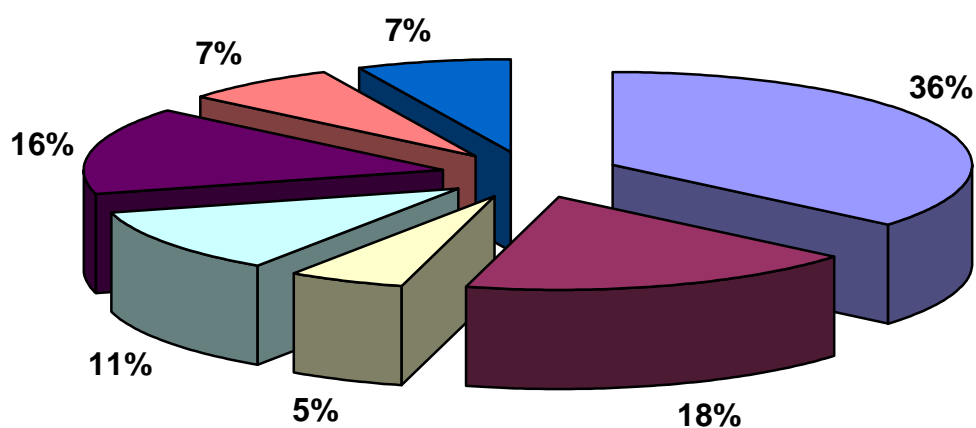


RAW MATERIAL REQUIREMENT

RAW MATERIAL	QTY CONSUMED PER ANNUM	NUMBER OF UNITS USING
RICE (Raw Paddy)	427800 Tonnes	116

USAGE OF RICE

(USAGE IN TONNES PER ANNUM)



■ Upto 750

■ Between 751 to 1500

■ Between 1501 to 3000

■ Between 3001 to 4500

■ Between 4501 to 7000

■ Between 7001 to 10000

■ Above 10000

FIELD OBSERVATIONS

- The cluster is spread across Khamam, Nakkalpally Road, Rajupet, IDA Rampur, Gorrekunta.
- All the units are quite recent, app 10-12 yrs in operation; certain units are 2/3 years old only.
- The units are running in an single shift, some units operate in 2shifts - 12 hrs.
- The major equipments used are Elevator, Rubber Sheller, and Polisher.
- The production /operation is seasonal in nature; the peak season is during October to February wherein the production goes upto 6 tpd.
- The manufacturing process

Raw Rice

- Paddy is put in the elevator
- Cleaner
- De Husker /Rubber sheller
- Seperator
- Polisher / Glaze master
- Grader
- De Stoner (separate small stones)

Boiled Rice

- Paddy is placed in hot water for 12 hrs
- Cleaning
- Boiler /Husk feeder
- Dryer
- Rubber Sheller
- Separator
- Polisher /Glaze master
- Grader
- De Stoner

- The major fuel is electricity, husk, and firewood.
- The major issue in this cluster is availability of manpower as well as high raw material price.

- In this cluster it was observed that a number of units were using husk feeder, an micro processor based unit which is an vibrating type used for paddy boiling furnace, the advantage as per the feedback from the respondents, it saves 20% .

ENERGY CONSUMED IN THIS CLUSTER

FUEL	QTY	ANNUAL COSUMPTION
ELECTRICITY	895000 UNITS/MTH	89,50,000 UNITS
FIRE WOOD	359 TPM	4300 TPA

SERVICE PROVIDERS

S.NO	NAME	CITY	TELEPHONE	REMARKS
1	Circars Laxmi Mill Store		9848125020	Provided service & equipment supply for Mill Tec
2	Milltec Machinery Pvt Ltd	Bangalore	080 27831128	Direct supply equipment also provided
3	Mr Ananda Babu , Milltec Service Engineer		9880624431	
4	Binghneswar Agencies (Tie up with Venkateshwara Engineering Works)	Vijaywada	0866 2843876	Provided Mill Tec machinery and services
5	Sai Kirsna Engineering Works	Vijaywada	9959123666	Provided Mill Tec Service
6	Mital & Sons	Hyderabad	i) 9848016552 ii) 9849017609	Service Provider for Satake Tech, Japan
7	Sri Venkaeshwar Engineerings, Service and Machinery	Vijaywada	i) 0866 2842771 ii) 0866 2843876	Supplier for Modern Tech
8	Mill More Engineerings	Chennai		Service and machinery supplier (Company own provided)
9	Laxmin Engg Works	Valsad Distt	0260 2565163	Service provider for boiler machines

10	Suri Tech Service Provider		040 24353831 Ext: 832 / 833	Service provider
11	LOCAL SERVICER FOR BINNI TECH		9866404202	Local Service provider for Binni Tech
12	Binni Tech	Chennai		Equipment and Service Provider
13	Sri Venkateswara Engg	Vijaywada	0866 2842771	

▪ **Rice Mills Association**

Hunter Road

Warrangal

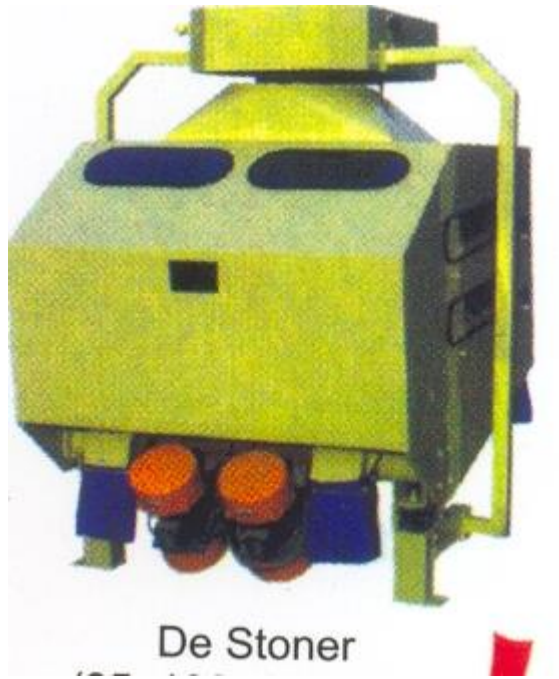
Ph: 0870 – 2524130

President: Shri Sampat Rao

BANKERS

- All the units have some or the other bankers. The major one are
 - SBI
 - Karur Vyas Bank
 - Andhra
 - Sahakari Bank
- None of the units have taken loan for any capital equipment, its for CC limits and working capital.
- The respondents were not aware of CGFTI

RICE MILL



Rubber Roller Husker



Brown Rice Conditioner



Vertical Rice Whitener

