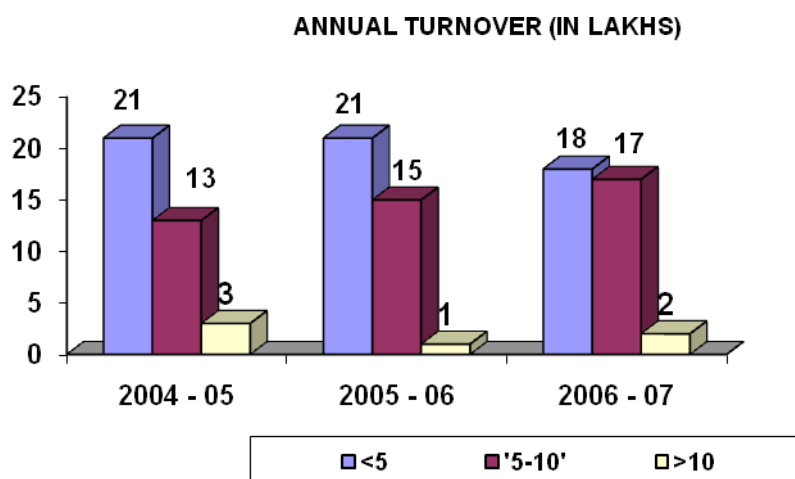


SUMMARY OF FINDINGS

- + This business is an household & age old business which is slowly diminishing and is restricted to certain tribes / communities
- + The units which are in operation are since 30 -35 yrs
- + The general turnover is app Rs. 3 – Rs. 7 lacs.
- + Production is in the range of 4 -10 tpa which largely depends upon orders
- + The products manufactured are Lota, Thali, Lamp, worship idols
- + The units do not run throughout the year, they are seasonal in nature, the capacity utilization varies from 60 KGPD to 150 KGPD.
- + The only raw material used is Brass and sometimes Zinc that is basically for polishing, both the material are locally sourced.
- + The fuel used is Hard coke.
- + Since its an low value business and an family run business wherein all the family members are engaged hence very few avail the bank facilities, that too Gramin Bank.
- + The total energy consumed in this cluster is negligible as no equipments are being used; only an buffing machine is there.

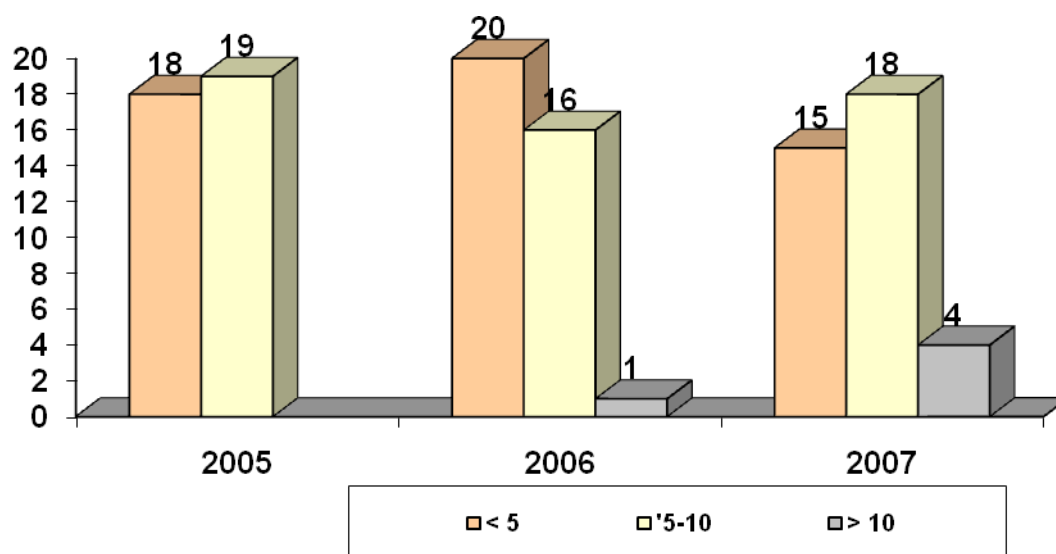
ANNUAL TURNOVER

Number of companies with turnovers in different ranges as given in index



PRODUCTION

All figures are in tonnes per annum

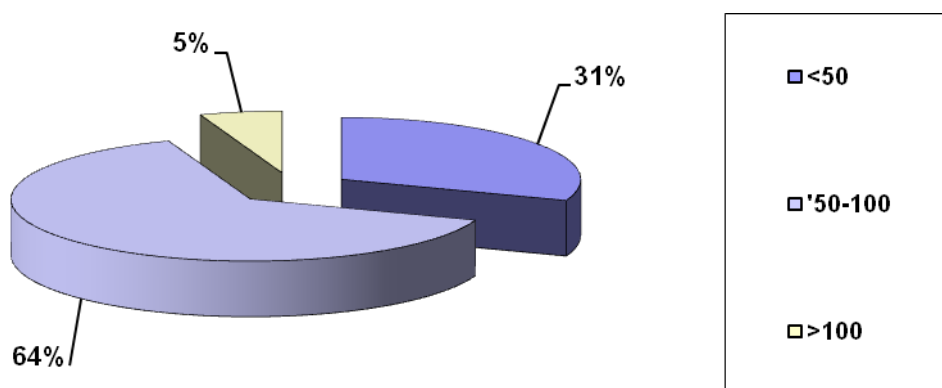


ENERGY REQUIREMENTS

	QTY	TPA (CONSIDERING 6 MTHS WORKING)
HARD COKE	2435 KG/DAY	438

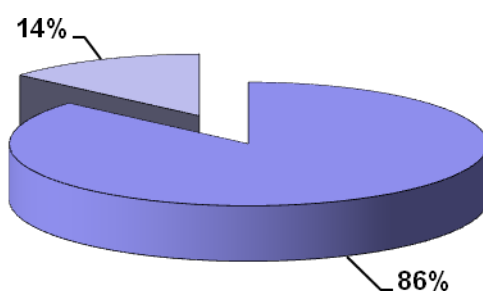
USAGE OF HARD COKE

(FUEL IN KG PER DAY)



RAW MATERIAL REQUIREMENTS

	QTY	TPA (CONSIDERING 6 MTHS WORKING)
BRASS	1265 KG/DAY	228
ZINC	244 KG/DAY	44

BRASS (KG PER DAY)

<50

50-100

FIELD OBSERVATIONS

- The cluster at bhubneshwar includes brassware, wherein some 44 units were listed
- The major areas were
 - Balakati : 6 km from bbsr
 - Pratap Sasan: 7 km from bbsr
 - Rathijema : 6 km from bbsr
 - Bainchua : 15 km from bbsr
- As per the field survey, the industry though a cottage industry is slowly diminishing, whatever units are running in various areas are family run business wherein the manufacturing system is located within their house and family members are engaged.
- No equipments are used, except for an buffing machine which is basically a polishing wheel, the equipment used for melting is an chula which they fabricate on their own.
- The major raw material is brass as well as to some extent zinc, which is purchased from local traders.
- The common process used in this cluster is
 - Raw material melted in the chula using hard coke
 - Put into shape by using wooden mould
 - Remove it and dip in water for cooling
 - Polishing with help of zinc powder
 - Final stage is buffing machine, which is operated with help of 1.5 to 2 hp motors.
- Majority of the units were in existence since 30-35 yrs whereas some are in business since last 40 yrs.
- The products largely manufactured were Thali, Lota, Stand, Lamp, Diya.
- Being an cottage industry no fixed time of operations as & when its convenient for them they operate since the entire family is engaged in it.
- As there is neither association nor any organized form of the units, which are in this business, there is no one to hear their issues / problems and the industry is gradually dying.

- All the units are running in 1 shift and there is no usage of any technology, neither any equipment which consume energy to a great extent are being used. The equipment which is being used is only for polishing of the end product.
- The fuel used is hard coke for the purpose of melting.
- The units are not in operation on an continuous basis, only when orders are there and before the festive season.

SERVICE PROVIDERS

- As such no service providers /association is there for these type of units.
- The raw material is sourced from either of the places

Madanmohan Traders	Rathijema,Tirisighar, Khurda	Mr. Ugrasen Sahoo 9337528045
Ambica Traders	Uttara Chhak, Kausalyaganga.	Mr. S. Mahanta
Tareni Traders	Uttara Chhak, Kausalganga	Mr. Sudershan Sahoo 933729674
Bhagwati Traders	Uttara Chhak	Mr. B. Mahanta
Bhairathi Metal Store	Utara Chhack, Khurda	Mr. Bhagirathi Maharana 0674 - 2465429

- The buffing machine consists of a rod and 2 wheels, which are supplied by local hardware shops.

BANKERS

- As the investment is not much, it being an family business /tradition, very few of the units are having any bankers.
- The bankers for some units are SBI, UCO or Gramin Bank.
- None of the units have availed any loan facility.
- As regards CGFTI, none of the respondents were aware of the same.

BUFFING MACHINE

